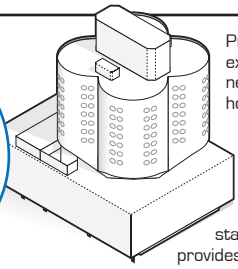


BERTRAND  
GOLDBERG'S

# PRENTICE HOSPITAL

1:1000  
Scale Model

©Wurlington Press/Matt Bergstrom

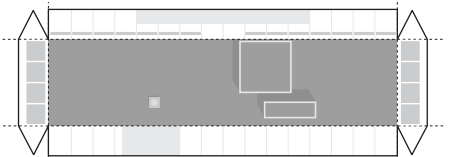
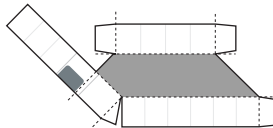
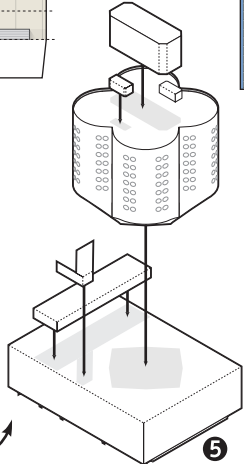
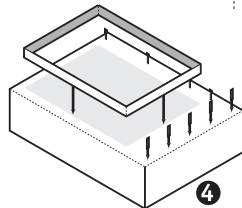
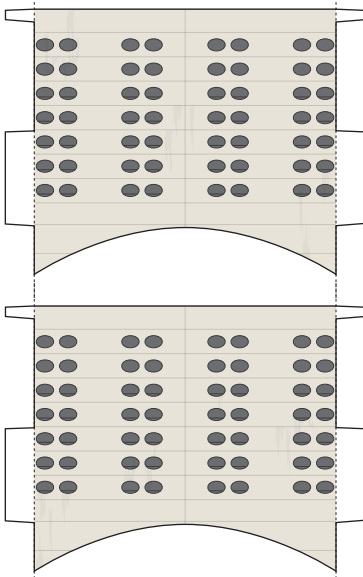
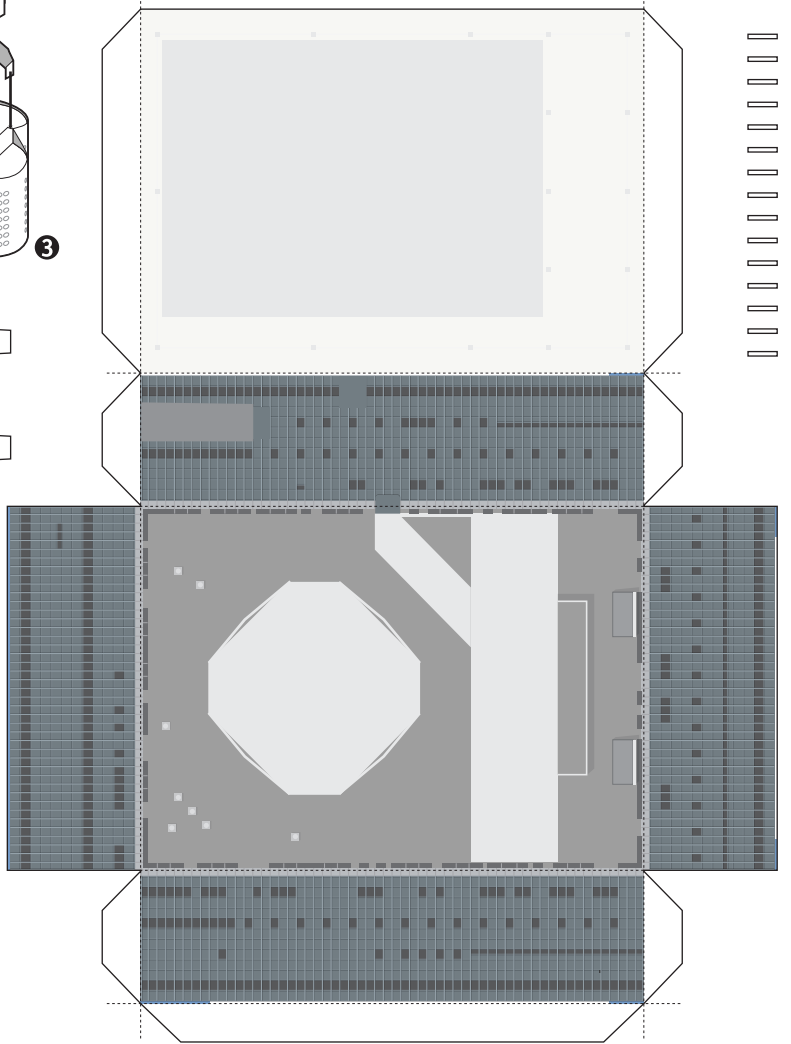
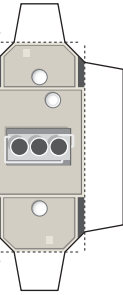
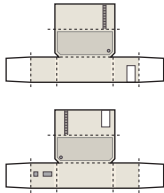
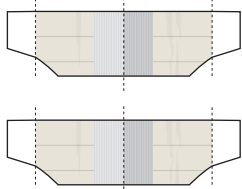
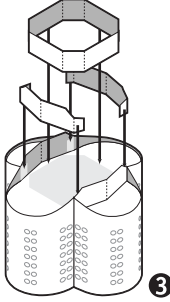
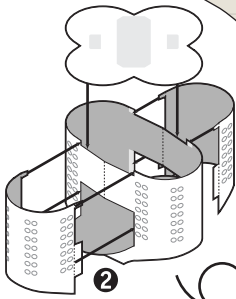
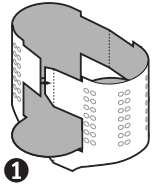
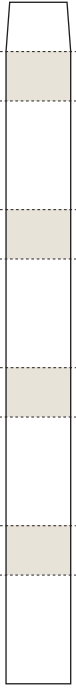
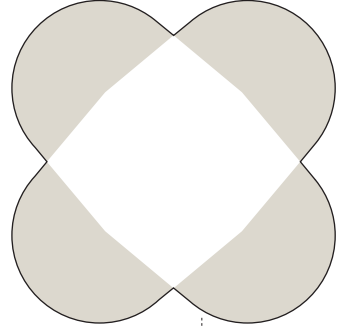
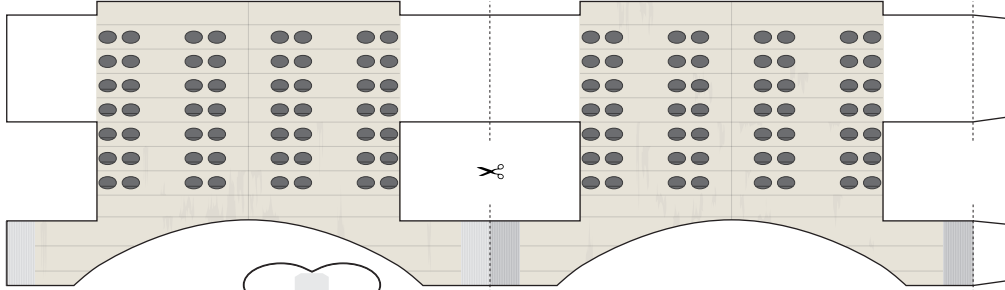
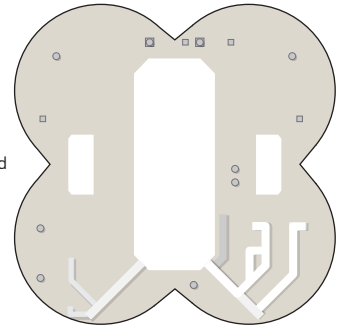


Prentice Women's Hospital is part of Northwestern Hospital's extensive medical campus in Chicago's Streeterville neighborhood. Architect Bertrand Goldberg designed many hospital buildings in the U.S., but is most known in Chicago for Marina City's iconic corn-cob-like towers.

The clover-leaf top of Prentice Women's Hospital won engineering awards for its innovative cantilevered concrete structure when the hospital was completed in 1975. The "bed tower" houses hospital rooms ringed four central nursing stations on each floor. The square Miesian base of the building provides general space for offices and treatment facilities.

Northwestern University built a new Prentice Women's Hospital in 2007 and made plans to raze the older building to possibly build a new lab facility in its place. While preservationists have proposed ways to reuse the historic building, its future is in doubt.

Please help save this unique piece of Chicago architecture! Go to [www.saveprentice.org](http://www.saveprentice.org)



More paper models at:  
[BuildYourOwnChicago.com](http://BuildYourOwnChicago.com)

