

**H**ere's a book of games and activities that ghouls and beasts of all ages can enjoy along with the *Cut & Assemble Haunted House* papercraft model published by Dover Publications.

Search for all the monsters hidden in the attic, basement and hallways. Solve the spooky puzzles and games. Turn your paper house into a miniature marble maze. Cut out the accessories to complete your Halloween scene and read about other ideas to add spooky detail and realism to your *Cut & Assemble Haunted House* papercraft model.



*Cut & Assemble Haunted House: An Easy-to-Make Paper Model*  
by Matt Bergstrom  
published by  
Dover Publications, 2018  
ISBN 978-0-486-82397-3

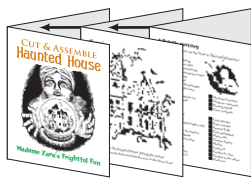
©Matt Bergstrom  
[www.wurlington-bros.com](http://www.wurlington-bros.com)

# CUT & ASSEMBLE Haunted House

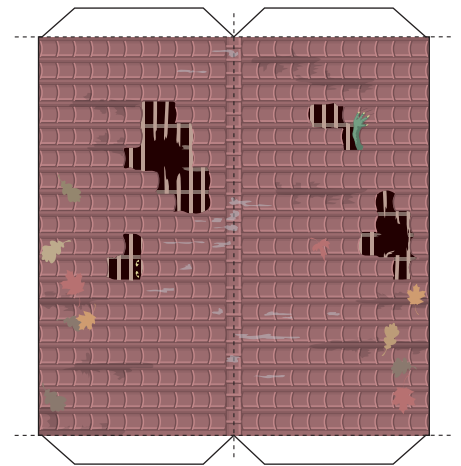
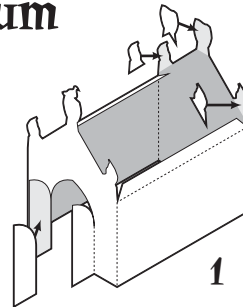
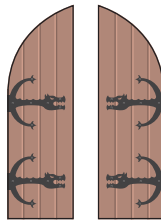


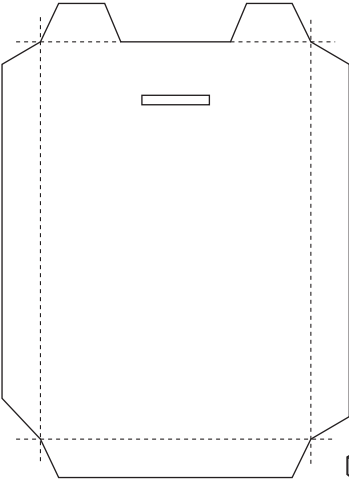
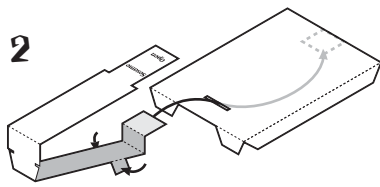
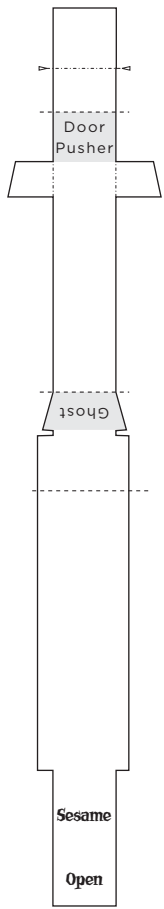
## Madame Zara's Frightful Fun

To assemble *Madame Zara's Frightful Fun* activity book: Print this sheet on heavy cardstock. Cut out the cover above and fold in half. Print out the PDF for the inner pages double-sided on the short side. Cut the sheets in two and fold each in half. Staple or sew the binding to complete your Haunted House mini activity book.

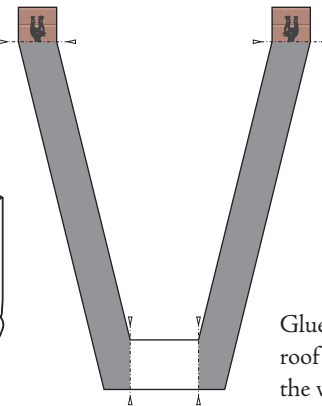
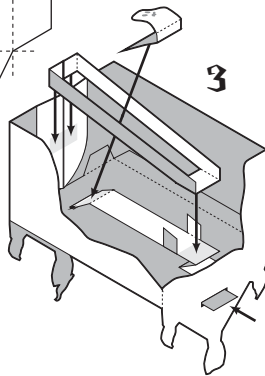


### Skorrenfold Mausoleum

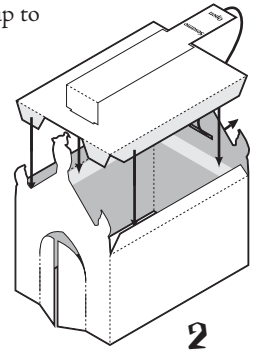




Curl the ghost backwards and fold on lines.  
Glue the base of the ghost to the pull tab.



Glue the roof to the walls



◆ For a devilish challenge, you can add an optional popup to open the doors of the mausoleum by themselves.

Cut out the slot in the rear wall before assembling the walls. Score behind the hinges of the front doors and cut the paper between the hinges with a knife so that the doors swing easily.

Slide the end of the pull tab through the slot in the ceiling and glue the end of the tab underneath at the back. Glue the ceiling into the walls, pushing the pull tab through the rear slot.

Add the inner doors. Trim the edge of the doors so that they do not catch on each other or the edges of the doorway.

Push the pull tab to its retracted position and close the doors. Glue the door pusher to the underside of the pull tab and inside of the doors, matching the dragon heads.

## Hearse

