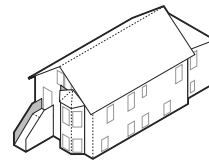




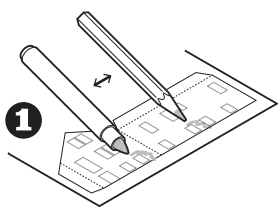
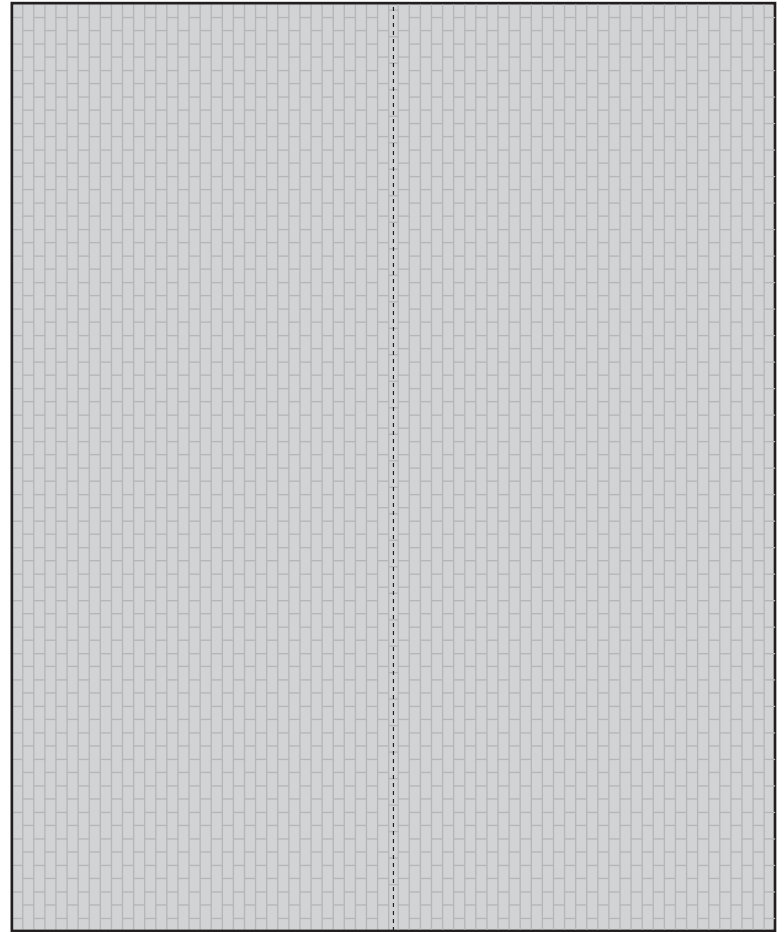
Chicago Vernacular Architecture - 1:87 Scale Model

Worker's Cottage



The Worker's Cottage is a simple gable-roofed house style which was popular in the nineteenth century as working-class housing. They are most commonly built of wood, less often in brick. The buildings are long and narrow to fit small city lots, typically 25-feet wide in Chicago.

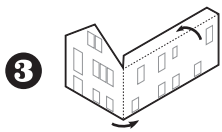
These small houses represented to new immigrants a hard-won bit of stability in an unstable job market. To add room for a growing family, an addition in back could be attached, or the entire house even raised to build another rental apartment floor underneath. The alterations and additions of every house tell the unwritten history of the families who have lived here in the past.



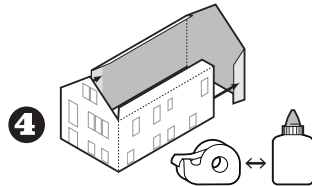
1
Color with marker or pencil



2
Cut on outlines



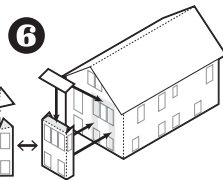
3
Fold walls



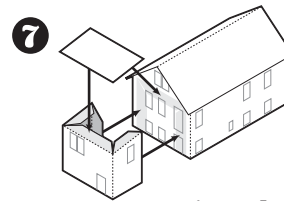
4
Tape or glue walls



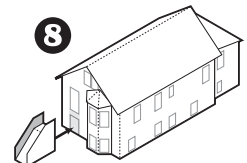
5
Attach roof



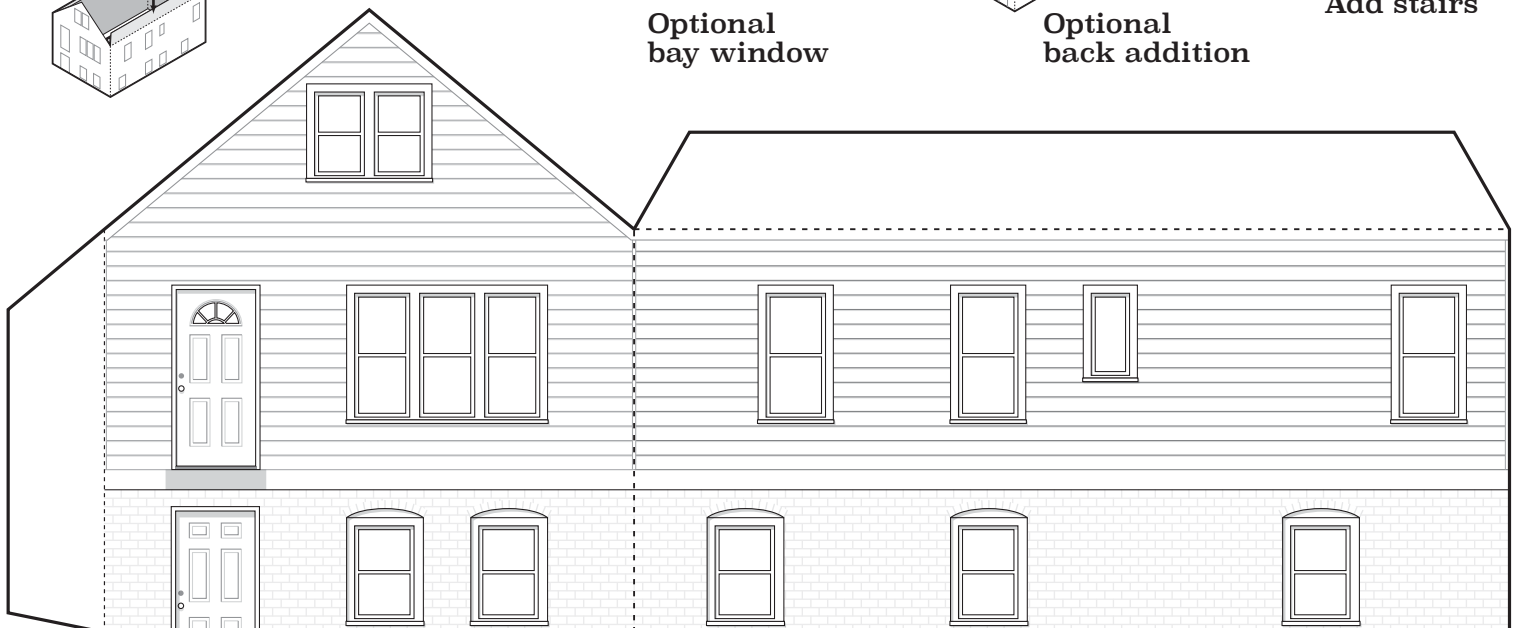
6
Optional bay window

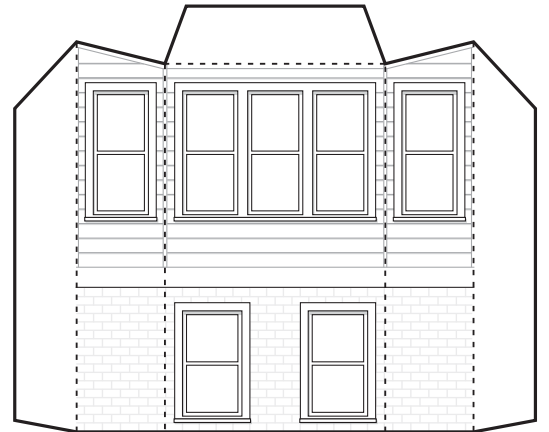
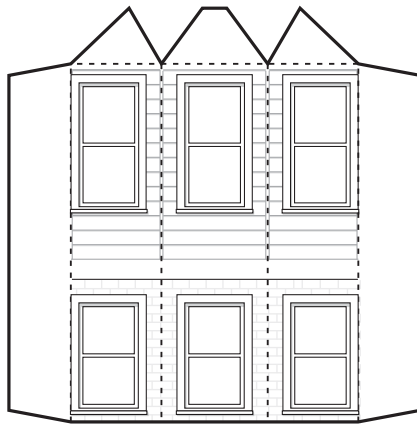
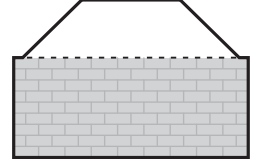
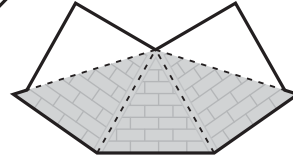
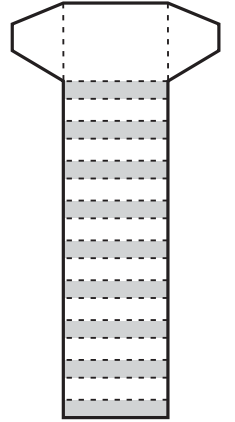
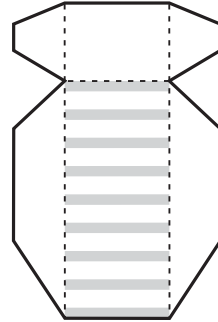
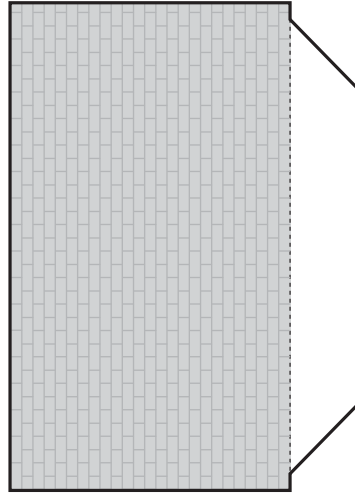
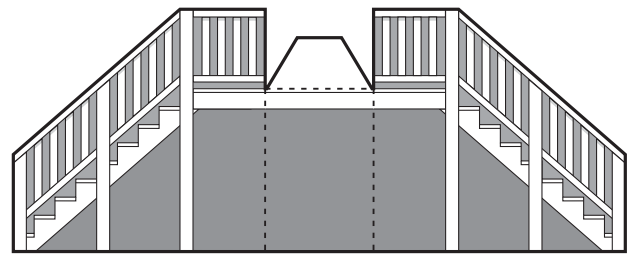
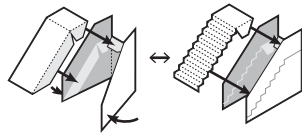
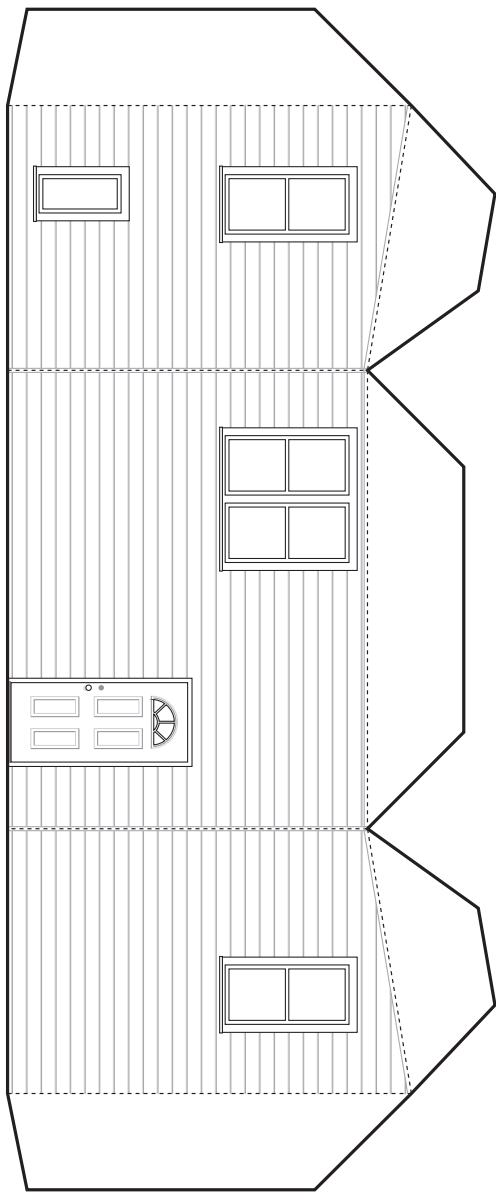


7
Optional back addition



8
Add stairs





©Matt Bergstrom
Wurlington Press
www.buildyourownchicago.com

