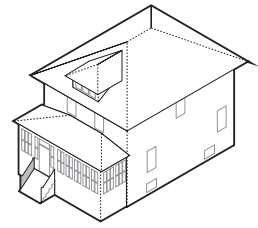


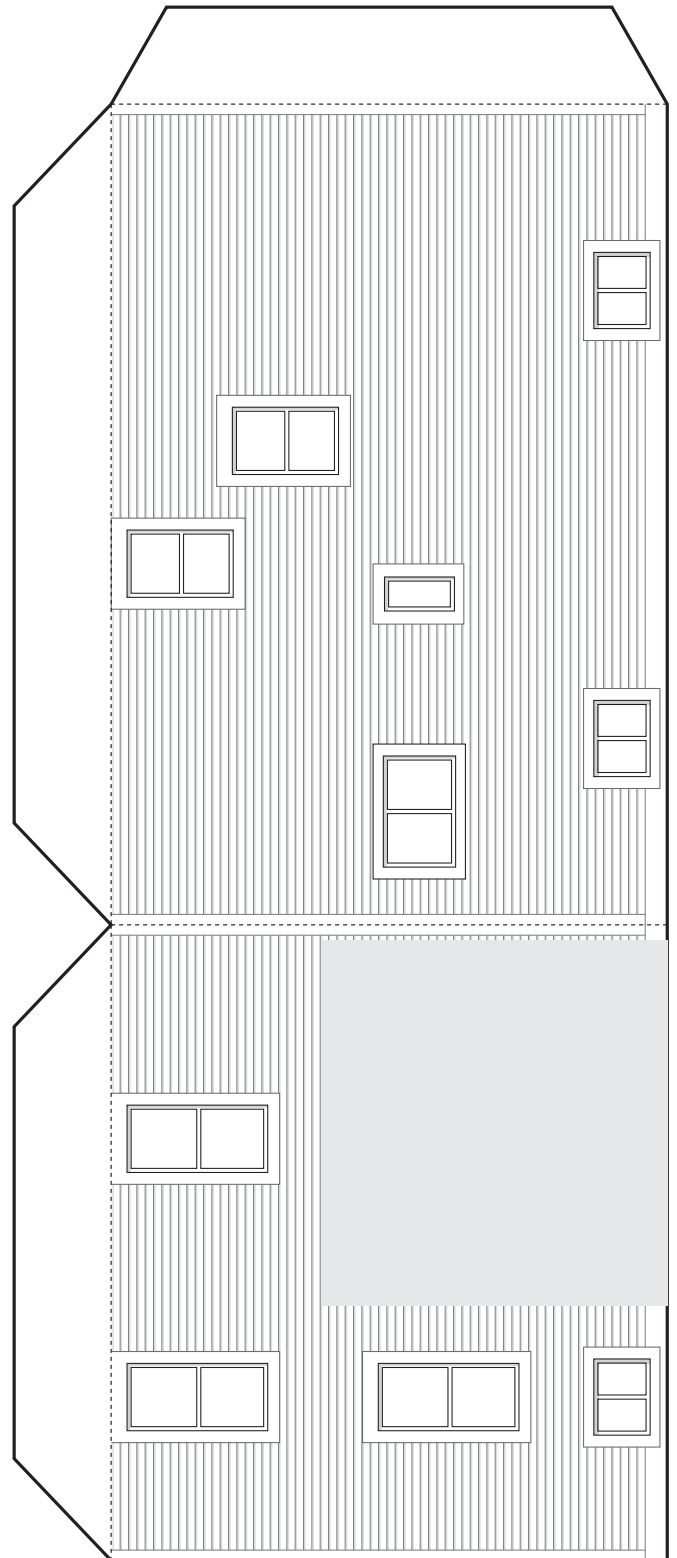
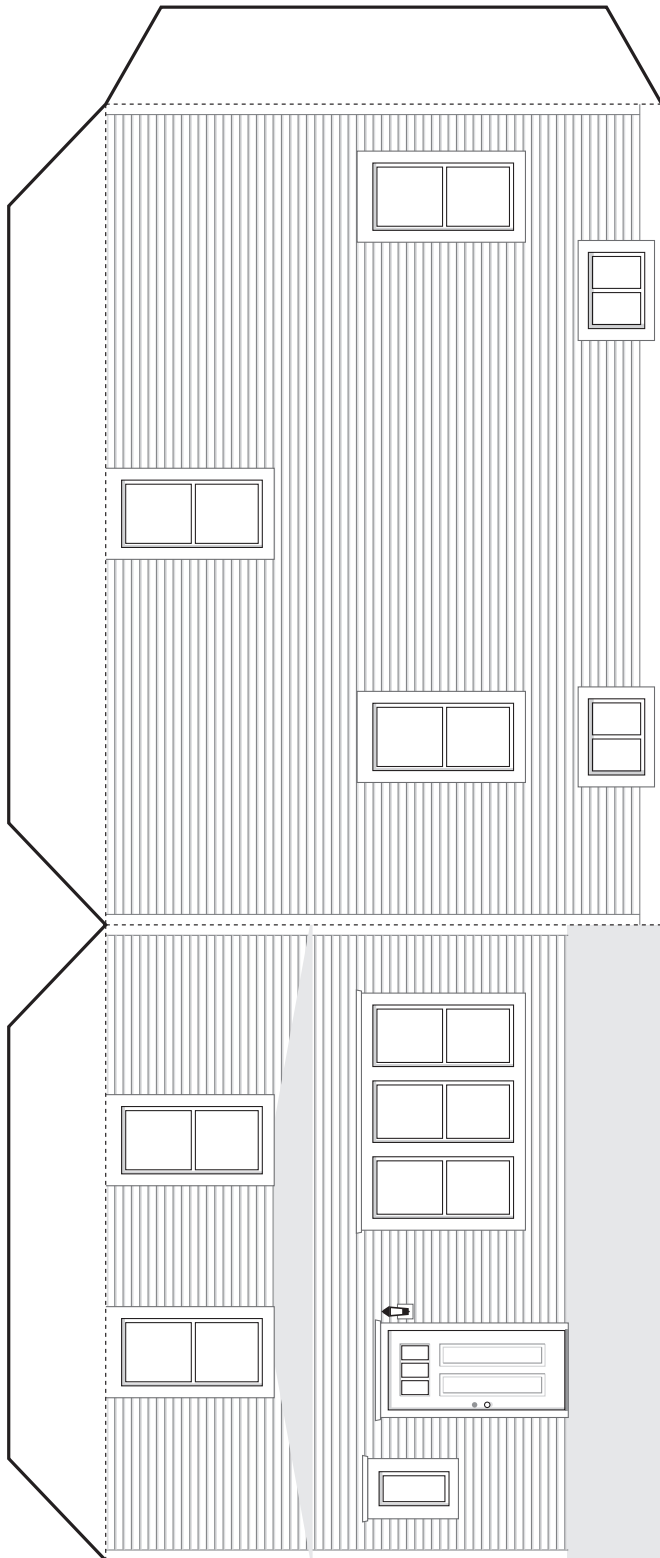


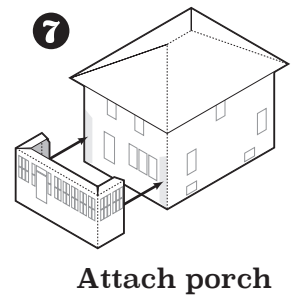
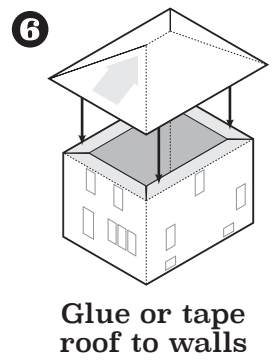
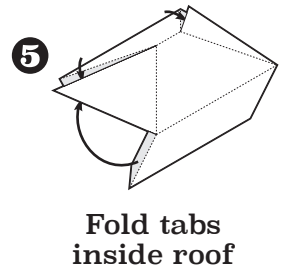
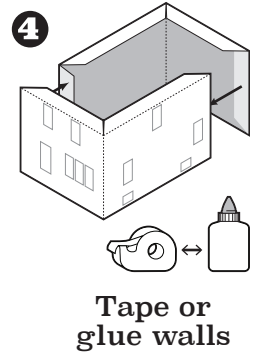
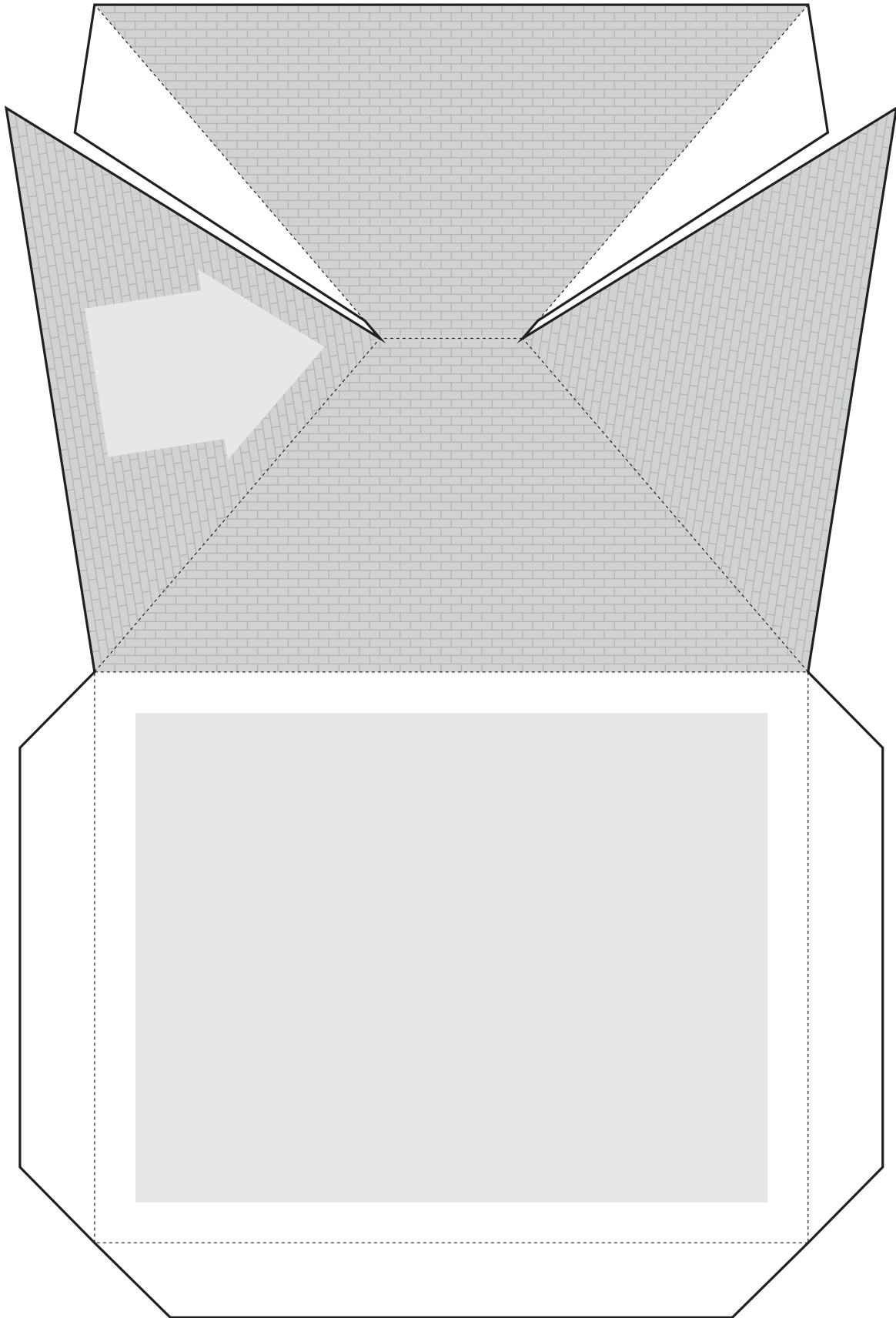
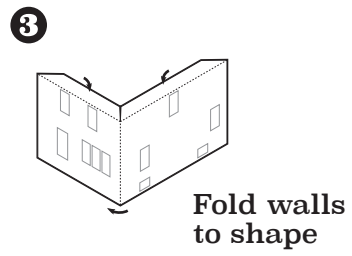
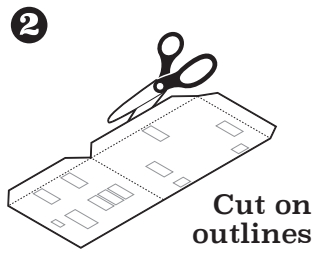
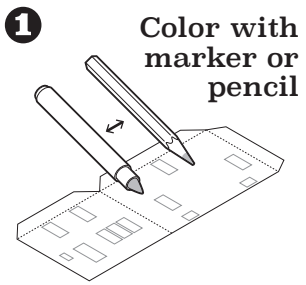
Chicago Vernacular Architecture - 1:87 Scale Model

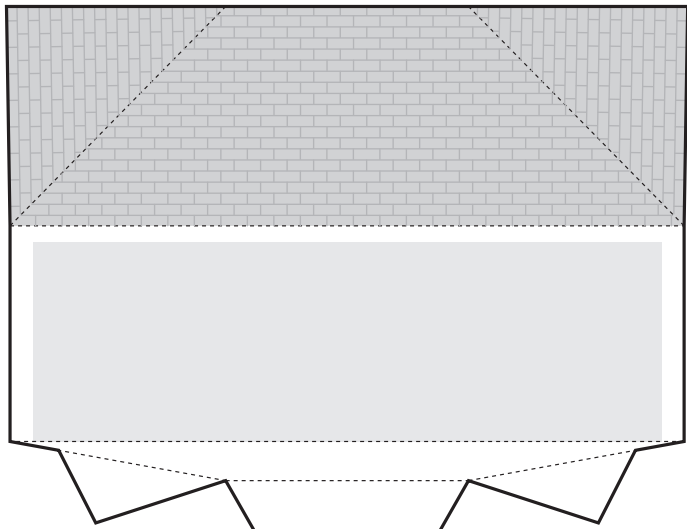
Four-Square House



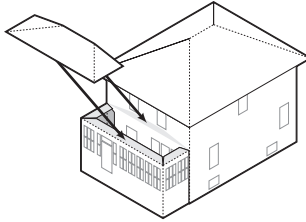
The "Four Square", "Box" or "Rectilinear" is a house type proportioned as roughly a cube with a pyramidal hipped roof. The house can be built of wood or brick. The house may include detailing in a variety of styles, from neoclassical porch columns to Craftsman-style shingle siding, but does not generally feature much exterior ornamentation. Most have a large front porch and front dormer window on the attic third floor. Four Square houses were usually built with four rooms on each floor.



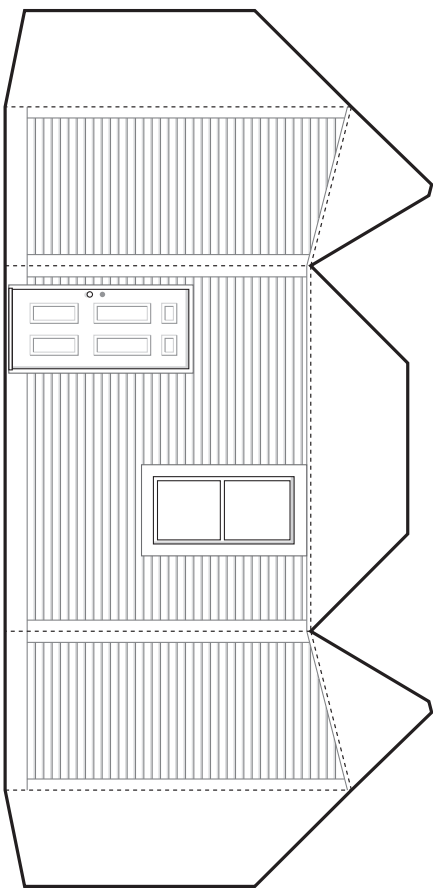
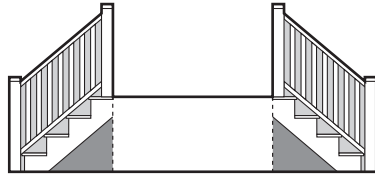
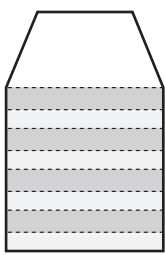
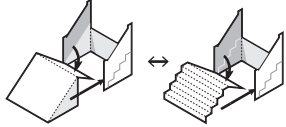
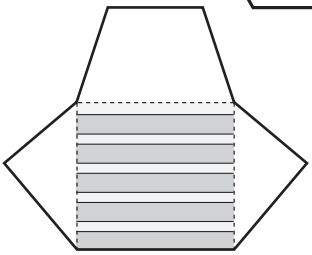
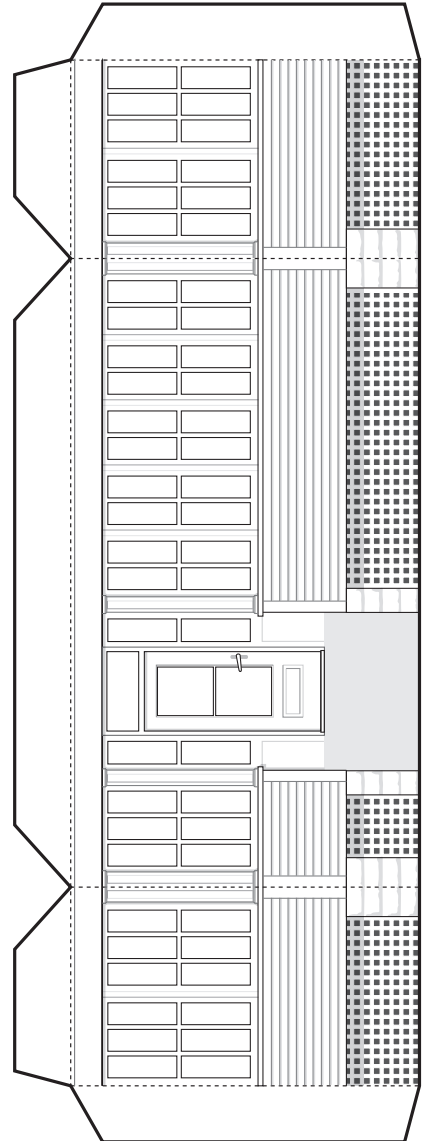




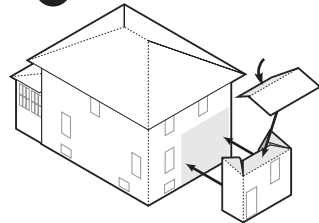
8



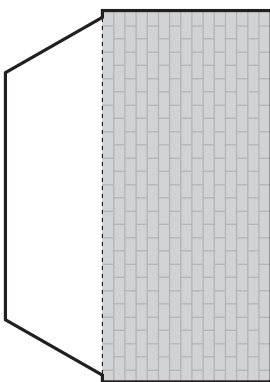
Add porch roof



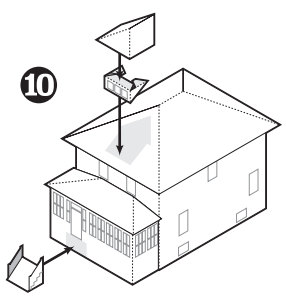
9



Add rear addition and roof



10



Add porch steps, dormer and dormer roof

